



STORM SMALL PLASTER RING

datasheet



The Storm Small Plaster Ring is part of the STORM SYSTEM® collection. A collection that includes a wide range of special designed products. The STORM SYSTEM® collection is carefully designed to flush the surface of any ceiling or wall, and all products will appear with an absolute minimum of tolerance and visibility.

The Storm Small Plaster Ring is designed to flush and completely disappear into any ceiling using filler, and is able to hold all the STORM SYSTEM® SMALL collection

GENERAL DATA

Collection

STORM SYSTEM®

Product

Storm Small Plaster Ring

Article no.

1A00.0002.01

SPECIFICATIONS

Weight

22 g / 0.77 oz

Material

ABS

Fixture Load

max. 6.5 kg 14.33''

(see step 2)

ADDITIONAL REQUIREMENTS:

Fixture from the STORM SYSTEM® SMALL collection

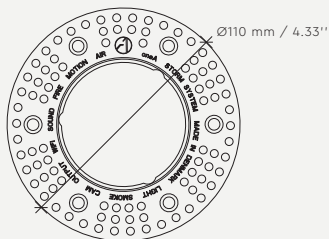
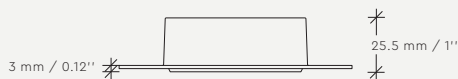


NOTE:

An installation ring for plasterboard and acoustic plaster ceilings.

IMPORTANT! It is crucial that the qualified personnel – painter or acoustic supplier installing this product, is handed this installation guide and follows it very carefully. Correct execution is paramount to the final result

If installing Storm Output, please be aware of the chosen pendant's static load. The anchoring of Storm Plaster Ring / ceiling must be carried out so that it corresponds with the chosen pendant's load.





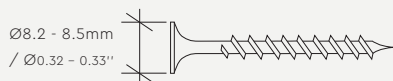
COMPONENTS

- Storm Small Plaster Ring
- Foam plug

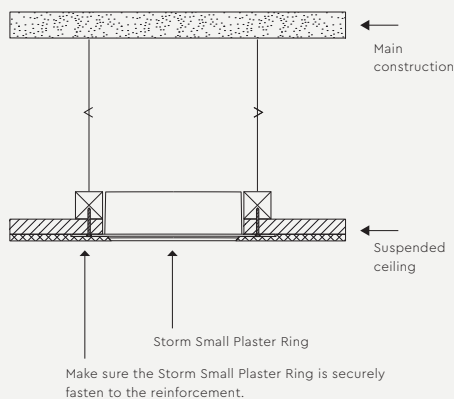
ADDITIONAL REQUIREMENTS - not included

- 6 x screws

Head diameter is crucial for succesful installation



SUSPENSION



IMPORTANT INFORMATION

Installation and mounting must be performed by a qualified personel only, and instructions must be followed. Always make sure the main power is off during installation.

CLEANING AND MAINTENANCE:

Use a soft moist cloth for cleaning. No further maintenance is required.

WARRANTY:

If the product is defect, please contact your supplier immediately. Please note that warranty will not apply in case of wrongful use or if unskilled personnel attempts to repair.



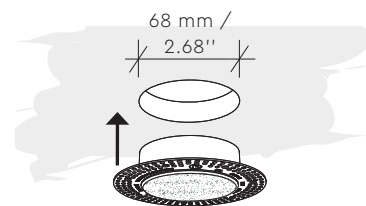
The crossed-out wheeled bin symbol indicates that the item should be disposed of separately from household waste. The item should be handed in for recycling in accordance with local environmental regulations for waste disposal

For more information, please contact info@onea.dk

ASSEMBLY INSTRUCTION

STEP 1

Cut a round hole with a diameter of 68 mm / 2.68"



STEP 2

Place the plaster ring in the hole and securely fasten it with screws. Remove all burrs.

Make sure that there is an optimal base for a secure attachment. *See detail

Static fixture load must not exceed 6.5 kg / 14.33 lbs

When installing heavy pendants, it may be necessary to secure additional anchoring.



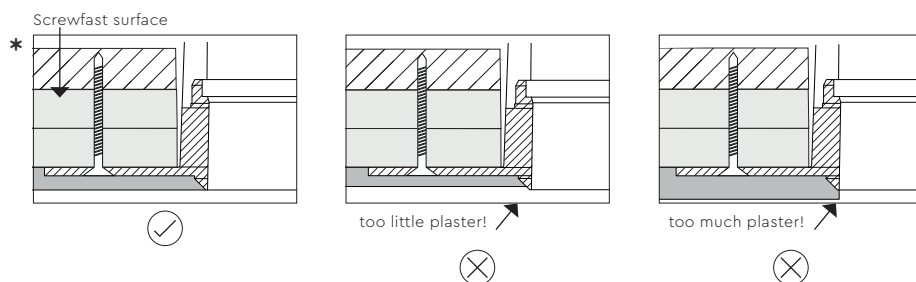
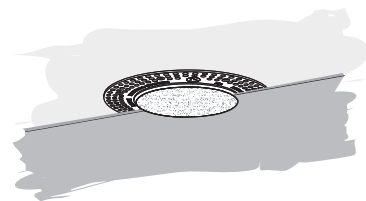
Note:

It is important that screws are anchored in screwfast material for optimal attachment.

STEP 3

When plastering the ceiling, the foam plug should be placed inside the plaster ring. Exercise caution when plastering to prevent damage of the plastering.

BE AWARE: DO NOT TOUCH THE EDGE OF THE PLASTER RING IF SANDING!



STEP 4

Remove the foam plug when the plastering is finished.

Please note that it is very important that the inside of the plaster ring is kept free of filler and paint. Any residue has to be removed. The plaster ring edge must not be damaged.

