

LED NEON





Cover Photos

UBS Arena | Elmont, New York, USA

Neon Contour Plus | Static White (5000K) & Static Color (Red)

INDEX

INTRODUCTION

Like Neon, But Better! 4

PRODUCTS

Neon Silhouette & Neon Silhouette Plus 6
Neon Contour & Neon Contour Plus 8
Neon Apex 10

MOUNTING ACCESSORIES

Mounting Clip, Mounting Channel, Hydro Seal 12

CONNECT

Contact Us 16

LIKE NEON, BUT BETTER!

Marry the classic gleam of neon with all the benefits of modern LEDs. Our 24V neon replacement products feature flexible silicone lenses that protect our premium RibbonLyte while diffusing the LEDs to create the look of neon. Rated IP67 for outdoor use, these waterproof LED neon products offer the full spectrum of lustrous colors designed to brave the elements in lettering, façade lighting and highlighting architectural details.

LED SELECTION

Because we manufacture our LEDs in our own factories, we can closely monitor the entire quality control process, from selection of the best raw materials to precise photometrics testing of every finished product. With superior efficacy and longevity, premium products like these provide big long-term savings in energy, maintenance and replacement costs.

CUSTOM COLORS!

We offer a variety of Static White CCTs and Variable White in our LED neon products - but we also manufacture RGB, RGBW and RGBW Addressable options that allow you to change colors like no neon tubes you've ever seen! Tune your neon to your distinct color choice or use DMX controls to alter colors as you see fit.

Right: Neon Apex



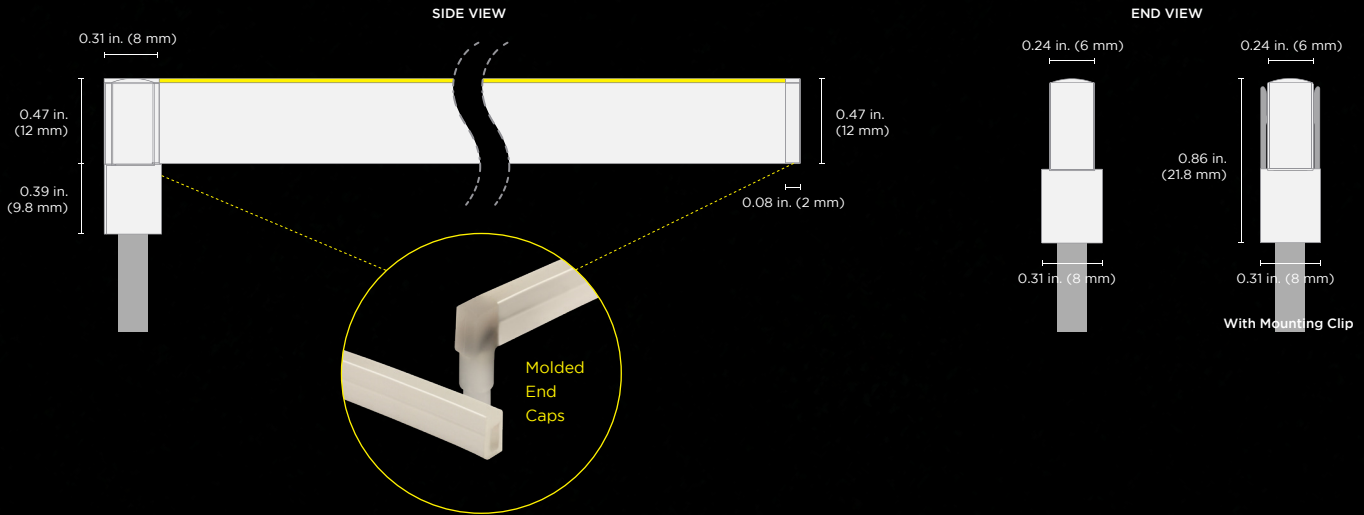
NEON SILHOUETTE



Neon Silhouette offers a smooth, flat lens that creates vivid pinpoint lines of light for highlighting architectural details.

- Create pinpoint lines
- Side-bending turn radius
- Min. bend diameter 4.72 in. (120 mm)
- 3.0 W/ft (9.8 W/m) Static White (2400K-4000K)
- 3.0 W/ft (9.8 W/m) Variable White (2400-6000)
- 3.0 W/ft (9.8 W/m) Color changing RGB

Dimension drawings show the bottom power feed with molded end caps. See spec sheet for end power feed. Neon Silhouette RGB models use larger silicone end caps



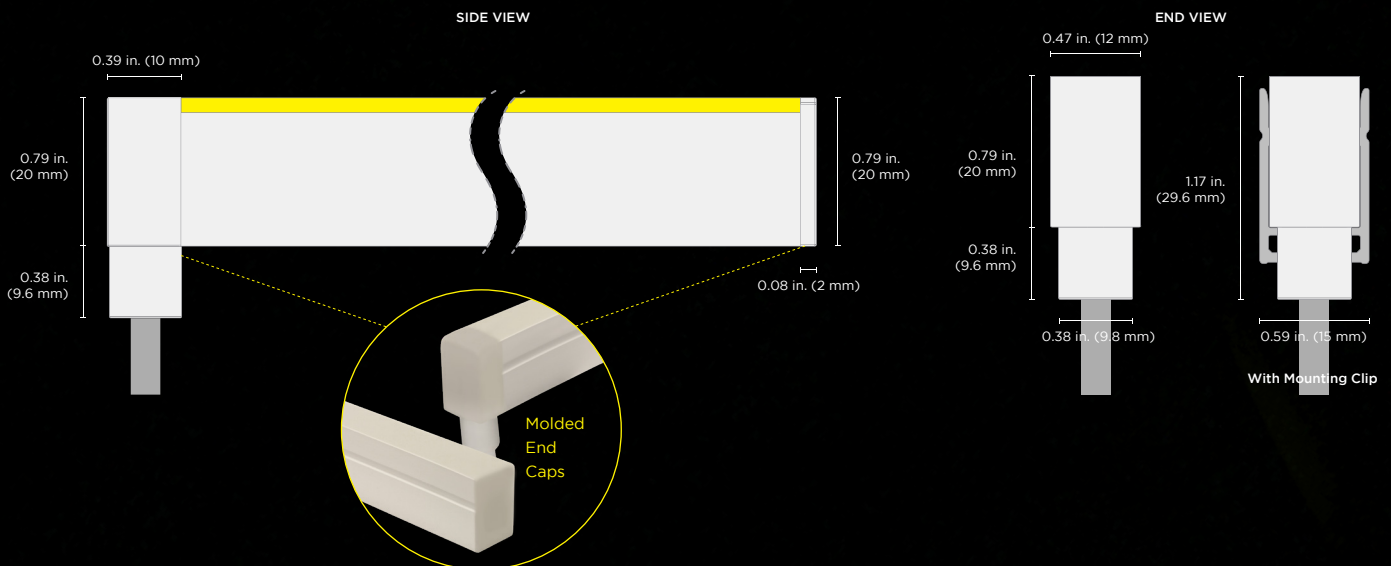
NEON SILHOUETTE PLUS



Neon Silhouette Plus offers a smooth, flat lens that creates larger vivid pinpoint lines of light.

- Create pinpoint lines
- Side-bending turn radius
- Min. bend diameter 9.44 in. (240 mm)
- 4.5 W/ft (14.76 W/m) Static White (2400K-4000K)
- 4.5 W/ft (14.76 W/m) Variable White (2700K-5400K)
- 4.5 W/ft (14.76 W/m) Color changing RGBW
- 5.3 W/ft (17.4 W/m) RGBW Addressable

Dimension drawings show the bottom power feed with molded end caps. See spec sheet for end power feed.





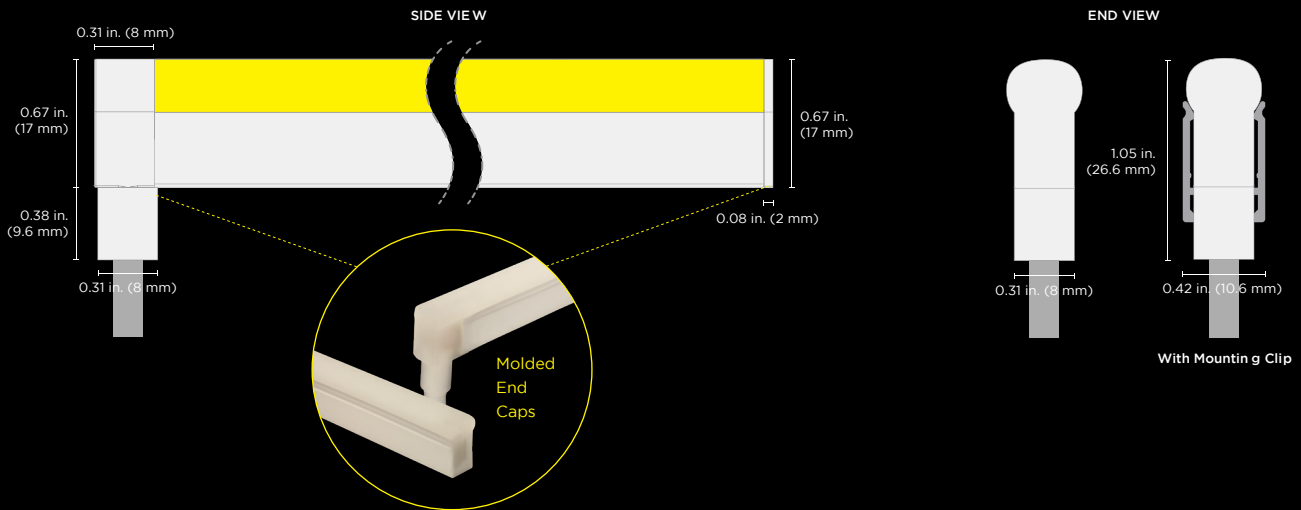
NEON CONTOUR

UL CE RoHS IP67

Neon Contour offers a rounded lens that creates a classic glowing tube-shaped light fixture that is great for lettering or architectural design with a retro feel.

- Create glowing tubes of light
- Side-bending turn radius
- Min. bend diameter 7.87 in. (200 mm)
- 3.0 W/ft (9.8 W/m) Static White (2400K-4000K)
- 3.0 W/ft (9.8 W/m) Variable White (2400-6000)
- 3.0 W/ft (9.8 W/m) Color changing RGB

Dimension drawings show the bottom power feed with molded end caps. See spec sheet for end power feed. Neon Silhouette RGB models use larger silicone end caps



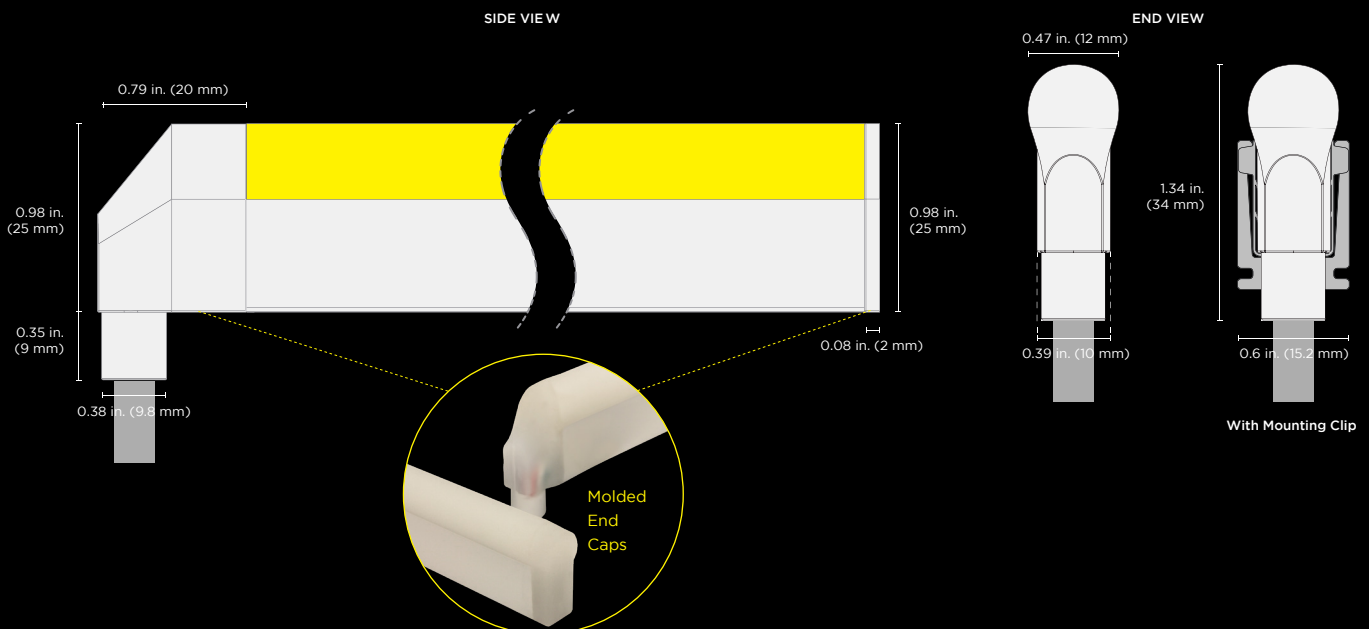
NEON CONTOUR PLUS

UL CE RoHS IP67

Neon Contour Plus offers a rounded lens that creates a larger classic tube-shaped light fixture.

- Create larger glowing tubes of light
- Side-bending turn radius
- Min. bend diameter 11.8 in. (300 mm)
- 4.5 W/ft (14.76 W/m) Static White (2400K-4000K)
- 4.5 W/ft (14.76 W/m) Variable White (2700K-5400K)
- 4.5 W/ft (14.76 W/m) Color changing RGBW

Dimension drawings show the bottom power feed with molded end caps. See spec sheet for end power feed.





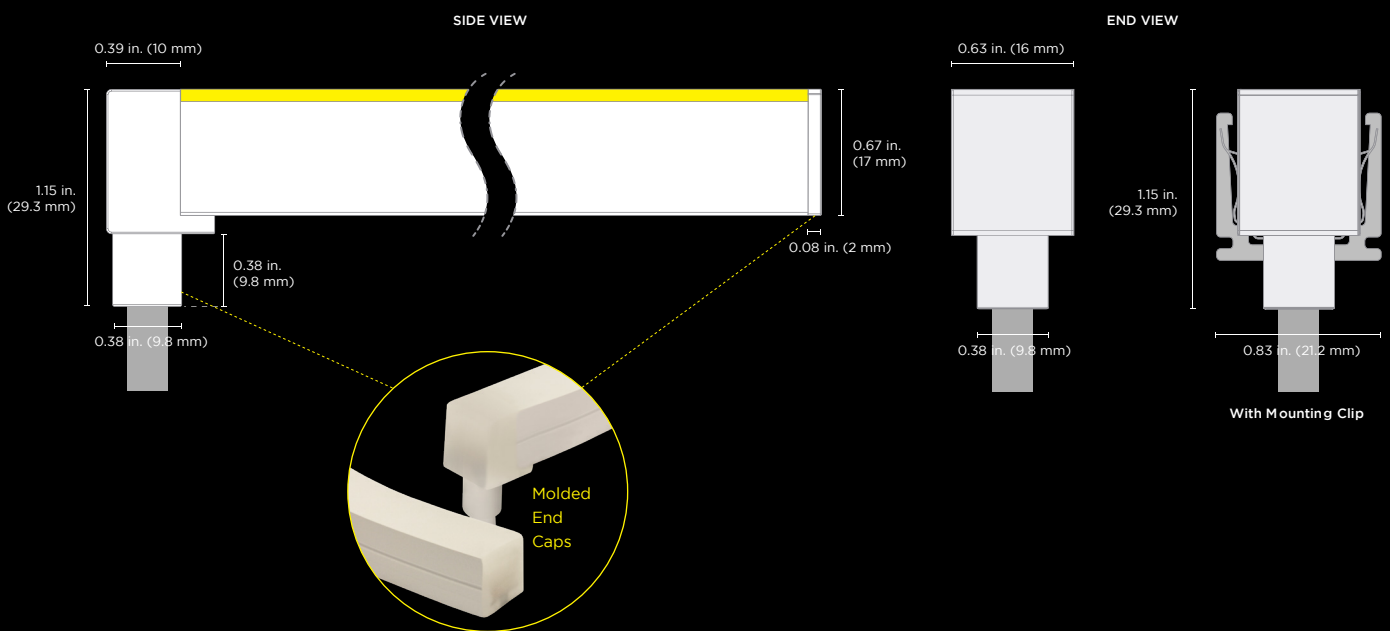
NEON APEX



The Neon Apex is a square flexible top-bend neon replacement product designed for unique applications such as convex or concave curves like arches or rounded frames.

- Create bold, gleaming lines of light
- Top-bending turn radius
- 4.5 W/ft (14.76 W/m) Static White (2400K-4000K)
- 4.5 W/ft (14.76 W/m) Variable White (2700K-5400K)
- 4.5 W/ft (14.76 W/m) Color changing RGBW
- 5.3 W/ft (17.4 W/m) RGBW Addressable
- Min. bend diameter 9.44 in. (240 mm)

Dimension drawings show the bottom power feed with molded end caps. See spec sheet for end power feed.



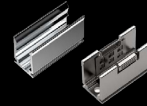


MOUNTING ACCESSORIES

Our LED neon products are flexible by design to allow for creative shapes, lettering and sinuous architectural lines. For curved applications, please use our Aluminum Mounting Clips. For straight lines or rigid applications, be sure to use our Aluminum Mounting Channel.

ALUMINUM MOUNTING CLIPS

Each product comes with its own specifically sized Aluminum Mounting Clips for a snug fit. Use the mounting clips at key stress points to create lettering or artistic curved applications.



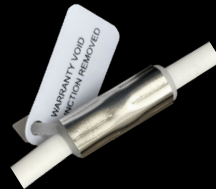
ALUMINUM MOUNTING CHANNEL

Use Aluminum Mounting Channel for rigid applications. Special order Aluminum Mounting Channel by the foot, up to 6 ft. 6 in. (1981 mm) per piece. Each applicable channel matches the height and width of the product-appropriate mounting clip.



HYDRO SEAL

The Hydro Seal clinches tightly around the conductors to prevent any water flow from the end of the wire to the circuit board through capillary effect. Please account for the width of the Hydro Seal when drilling for power feed access. Removal of the Hydro Seal will void any warranty.







Left Top, Bottom:
Sky Bar at Lebua Bangkok | Bangkok, Thailand

Right Top:
Hyatt Centric Beale Street Memphis | Memphis, TN, USA

Right Bottom:
CityWay | Indianapolis, IN, USA



CONTACT US

CALL US. EMAIL US. WRITE US A LETTER.
CONNECT WITH US ON SOCIAL MEDIA.



PRICING & SALES SUPPORT

T: (+1) 212 629 6830, ext. 300
E: SalesSupport@GENLEDBrands.com



TECHNICAL SUPPORT

T: (+1) 212 629 6830, ext. 301
E: Tech@GENLEDBrands.com



CUSTOMER SERVICE

T: (+1) 212 629 6830, ext. 304
E: CustomerService@GENLEDBrands.com



[linkedin.com/company/genledacolyte](https://www.linkedin.com/company/genledacolyte)



[facebook.com/acolyteled](https://www.facebook.com/acolyteled)



[instagram.com/acolyte_led](https://www.instagram.com/acolyte_led)



twitter.com/acolyteled

See our product videos in the Media section at Acolyte.com



GEN LED Brands™

ACOLYTE®
Architectural Lighting Solutions

AGILIGHT®
Innovative Signage Lighting

GLOBAL HQ & AMERICAN SALES

U.S., Canada, Central and South America

320 Murray Hill Pkwy
East Rutherford, NJ 07073
T: (+1) 212 629 6830
E: Sales-US@GENLEDBrands.com

EUROPEAN SALES HQ

With offices in Netherlands, UK, Italy, Germany

Dali Building
Herikerbergweg 286, 8th Floor
1101 CT Amsterdam, The Netherlands
T: (+31) 85 208 6093
E: SalesEurope@GENLEDBrands.com

MEINA SALES HQ

Middle East, India, Africa

PO Box 371378, #823, Building 4EA
Dubai Airport Free Zone, Dubai, UAE
T: (+971) 4 701 7901
E: SalesMEINA@genlebrands.com

ASIA-PACIFIC SALES HQ

With offices in Shenzhen, Shanghai, Singapore, Australia

Room 310-311, Building 8A-2,
Dezhigao Science Innovation Park, Zone 72
Xin'An Street,
Bao'An, Shenzhen,
China
Sales: (+86) 139 1836 3905
Office: (+86) 755 8529 0710
E: Sales-Pacific@GENLEDBrands.com

CONNECT WITH US

Stay informed about our industry-leading product and service updates, recent installations and more!

www.GENLEDBrands.com
AcolyteLED.com
AgiLight.com



www.GENLEDBrands.com/Acolyte
P. +1 212.629.6830
F. +1 210.360.1454
Sales-US@GENLEDBrands.com

Above: Got Fish | Hampton, VA, USA
Custom NeonLyte
Lighting Designer: iCRAVE

© 2022 GENLED Brands™. All rights reserved.

Some designs and technologies in the catalog are covered by U.S. Patents.

Corporate Headquarters East Rutherford, New Jersey, USA

New Jersey & Texas, USA • Shanghai & ShenZhen, China • Singapore • Dubai, UAE • Amsterdam, Netherlands • Sydney, Australia

REV.22NOV2022

