

CHANNEL BROCHURE





Cover Photo

Shown: Milos Wine Bar | New York, NY, USA

Static White Series 2 RibbonLyte, AR1 channel, AS2 channel, 24V Lutron Hi-lume driverLighting

Designer: Hilary Wainer, Lux et Veritas Design

Photographer: David Handschuh

INDEX

INTRODUCTION

Custom Fixtures	4
Lenses	6
Finishes & Applications	8

CHANNELS

Surface-Mounted	10
Corner	14
Recessed	16
Simply Clean™ Mud-in Extrusions	20
Indirect Light	22
Micro	24
Piccolo Micro Fixture	26
Bendable	28
Round	29

ACCESSORIES & EXTRAS

Mounting Clips	32
Magnetic Mounts	32
Tiltable Stands	32
ROUND12 Channel Accessories	34
Connection Options	37

CONNECT

Contact Us	38
------------	----

CHANNEL FIXTURES



RoHS IP20 IP65 IP68

IT'S EASY TO CREATE CUSTOM FIXTURES

Acolyte offers an incredible variety of aluminum channel extrusions designed to fit almost any architectural lighting application. Available in a broad range of suitable widths, depths, colors and beam angles and custom cut to your specifications, these durable channel options provide great creative freedom while they protect and enhance our proprietary RibbonLyte products.

This catalog will show you everything you need to design custom surface mounted and recessed fixtures. Use our micro channels for fine lines in tight spaces. Our Simply Clean series lets you create light that lies flush to any surface. Take your lighting to new levels with our bendable channels or magnetic mounting options.

Further customize your fixtures with a diffuser lens that keeps the focus on your lighting design. Most of our channels offer the choice of milky, frosted or clear lens as well as other specialty lenses that allow you to control hot spots, glare, color temperature and lumen output.

From cabinets to coves. From backlighting to bars. Whatever your application, you'll find your custom Acolyte solution inside.

Consulting Firm Office | Washington D.C., USA
1.5 Static White Classic RibbonLyte & WH35 Channel
Photographer: Chris Spielmann



LENSES

Channel lenses provide a polished, finished look for your custom LED fixtures. They protect your LEDs from breakage and contaminants such as dust, and help you control overall light output. We offer diffuser lenses at three basic levels of transparency: clear, frosted or milky. We also offer specialty grazer lenses, black lenses, prismatic lenses and distinctly shaped square and round lenses. Pick the lens that allows the light dispersion and distribution you desire.



92-93% Light
Transmission

CLEAR LENS

Choose a clear lens to allow the brightest light – the highest lumen output – from your fixture. Designers often utilize clear lenses where a hidden fixture will provide ambient light and there is no worry about brightness or glare in a direct light setting or when they want a stylized fixture that allows full visibility of the LED diodes.



85-90% Light
Transmission

FROSTED LENS

Choose a frosted lens to help diffuse the light output of your LED diodes. With a frosted lens, LED pitch and channel depth become extremely important in achieving the look you want. A frosted lens generally limits glare issues but will also reduce brightness, so factor in the opacity of the lens when choosing a RibbonLyte product with certain CCTs, colors and lumen output levels.



70-75% Light
Transmission

MILKY LENS

Choose a milky lens to fully diffuse the light output of your LED fixtures. A milky lens is generally the best solution for a design that eliminates “hot spots” to provide a continuous strip of uniform light while sharply limiting glare and controlling lumen output.



70% Light
Transmission

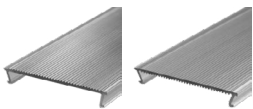
BLACK LENS

A black lens provides great LED light diffusion. It does not change the color of the light your fixtures emit – and when your LEDs aren't in use, the black lens provides a sleek look that can help hide your light fixtures.



Above: Lake Houston Family YMCA | Kingwood, TX, USA | AS2, AS3, and AC2 Channels

Visit genledbrands.com/acolyte to see spec sheets that clearly explain diode visibility and lumen output levels for each channel extrusion and its compatible RibbonLyte products.



Narrow: 76% Light Transmission

Wide: 70% Light Transmission

NARROW & WIDE PRISMATIC LENSES

Prismatic lenses provide diffusion and glare reduction that is similar to our frosted lenses but with slightly different patterns. We offer a narrow textured prismatic lens and a wide textured prismatic lens in some of our newer channel options.



Square: 70% Light Transmission

Round: 70% Light Transmission

SQUARE MILKY & ROUND MILKY LENSES

Square lenses help create a unique fixture, whether they are used in surface mounted channels or sleek recessed channels that leave only the lens protruding from the surface. The square lens diffuses light from three visible surfaces.

Choose a round lens in certain fixtures that allow for a wide dispersion of light, including our bendable B2 Bendable Channel, which can be used to illuminate the inside or outside of an arch!

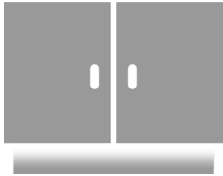


90% Light Transmission

GRAZER LENS

Certain channel options let you choose a grazer lens that provides a focused angled beam of light from your LED fixtures. These lenses are best used for wall washing or dramatic wall grazing effects.

CHANNEL APPLICATIONS



Under-Cabinet Lighting



Backlighting



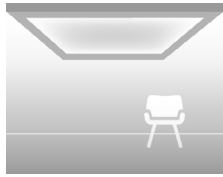
Wall Washing & Wall Grazing



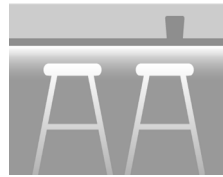
Accent Lighting



Toe Kick Lighting



Cove Lighting



Bar Lighting

CHANNEL HOUSING FINISHES



SILVER (SV)

Default Finish



BLACK (BK)



WHITE (WH)

Custom colors available upon request.

Right, Above: JPMorgan Chase Private Office WH35 Channel | Photographer: Hendue Vidal

Right, Below: Mobile Museum of Tolerance AS1 & AC1 Channels | Photographer: MRA Corp.





SURFACE-MOUNTED CHANNELS

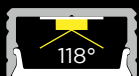
Surface mounted channels provide the most universal applications for LED lighting. Acolyte offers an amazing selection of surface mounted channels. Slim, wide, shallow, deep — choose from an array of sleek aluminum extrusions and complete your fixture with a choice of lenses for optimum light diffusion.

See accessories on page 30.
Appropriate end caps included with each fixture.

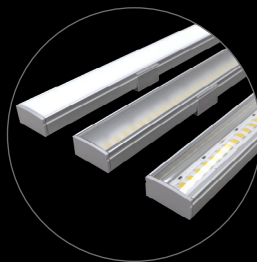
Suggested Applications:



AS1



Part: CHAS1
W: 0.68 in. / 17.2 mm
H: 0.34 in. / 8.7 mm
Inside W: 0.57 in. / 14.6 mm



Available Accessories:
Mounting Clip (included)

Magnetic Mount, Tilttable Stand (not included)

Housing Finishes:



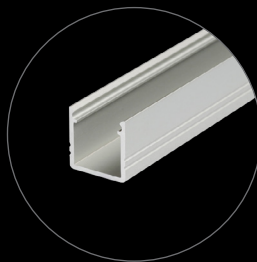
Lens Finishes:

Clear, Frosted, Milky

AS10



Part: CHAS10
W: 0.47 in. / 12 mm
H: 0.47 in. / 12 mm
Inside W: 0.39 in. / 10 mm
Inside H: 0.31 in. / 8 mm



Available Accessories:
Mounting Clip (included)

Magnetic Mount,
Tilttable Stand (not included)

Housing Finishes:

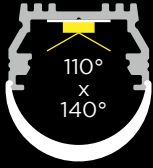


Lens Finishes:

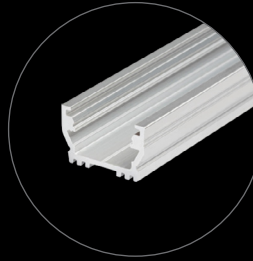
Clear, Milky

Top: Great Jones Distilling Co. | New York, NY, USA
AC2 Channel with Static White and Warm Dim RibbonLyte | Lighting Design: Lighting Elysium | Photographer: David Handschuh

AS12



Part: CHAS12
W: 0.76 in. / 19.2 mm
H: 0.8 in. / 20.3 mm
Inside W: 0.47 in. / 12 mm
Inside H: 0.63 in. / 16 mm



Available Accessories:
Mounting Clip (included)
Magnetic Mount,
Tilttable Stand (not included)

Housing Finishes:

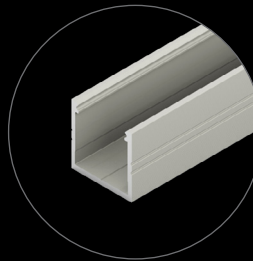


Lens Finishes:
Round Milky

AS16



Part: CHAS16
W: 0.74 in. / 18.8 mm
H: 0.73 in. / 18.6 mm
Inside W: 0.65 in. / 16.4 mm
Inside H: 0.63 in. / 16 mm



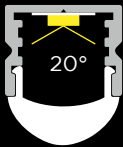
Available Accessories:
Mounting Clip (included)
Magnetic Mount,
Tilttable Stand (not included)

Housing Finishes:

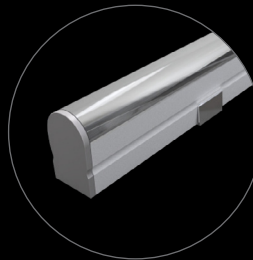


Lens Finishes:
Clear, Milky, Black

AS20G



Part: CHAS20G
W: 0.61 in. / 15.5 mm
H: 0.71 in. / 18 mm
Inside W: 0.42 in. / 10.7 mm



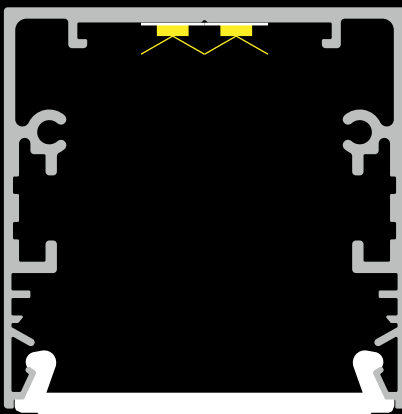
Available Accessories:
Mounting Clip (included)
Magnetic Mount,
Tilttable Stand (not included)

Housing Finishes:

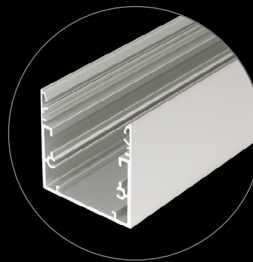


Lens Finishes:
Grazer

AS53



Part: CHAS53
W: 2.09 in. / 53 mm
H: 2.09 in. / 53 mm
Inside W: 1.32 in. / 33.6 mm
Inside H: 2 in. / 51 mm



Housing Finishes:



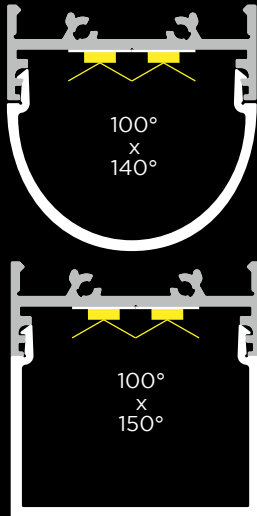
Lens Finishes:

Narrow Prismatic,
Wide Prismatic,
Milky

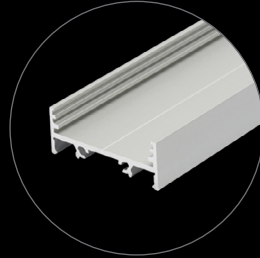
SURFACE-MOUNTED CHANNELS

See accessories on page 30.
Appropriate end caps included with each fixture.

AS13



Part: CHAS13
W: 1.31 in. / 33.4 mm
H: 1.29 in. / 32.7 mm
Inside W: 1.22 in. / 31 mm
Inside H: 1 in. / 25.3 mm



Available Accessories:
Mounting Clip (included)
Magnetic Mount,
Tilttable Stand (not included)

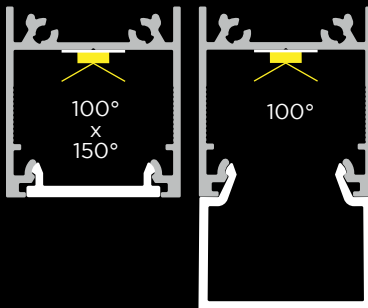
Housing Finishes:



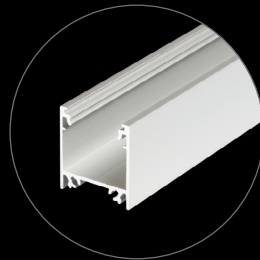
Lens Finishes:
Round Milky,
Square Milky

W: 1.31 in. / 33.4 mm
H: 1.37 in. / 34.8 mm
Inside W: 1.22 in. / 31 mm
Inside H: 1.07 in. / 27.3 mm

AS23



Part: CHAS23
W: 0.91 in. / 23 mm
H: 0.99 in. / 25.1 mm
Inside W: 0.83 in. / 21 mm
Inside H: 0.72 in. / 18.2 mm



Available Accessories:
Mounting Clip (included)

Couplers: 180° (not included)

Magnetic Mount,
Tilttable Stand (not included)

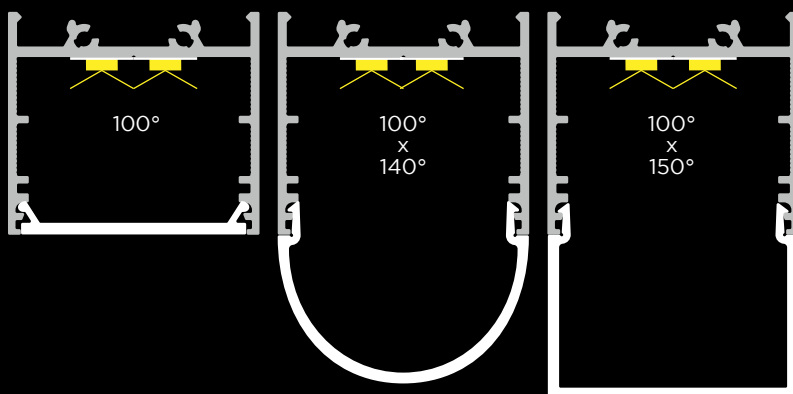
Housing Finishes:



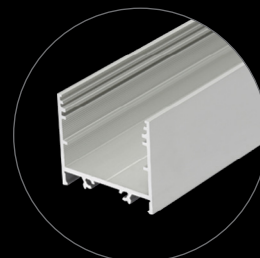
Lens Finishes:
Clear, Milky, Black,
Square Milky

W: 0.91 in. / 23 mm
H: 1.59 in. / 40.5 mm
Inside W: 0.83 in. / 21 mm
Inside H: 1.32 in. / 33.4 mm

AS30



Available Accessories: Mounting Clip (included);
Couplers: 180° (not included)
Magnetic Mount, Tilttable Stand (not included)



Housing Finishes:



Lens Finishes:
Clear, Milky, Black,
Square Milky, Round Milky

Part: CHAS30
W/H: 1.31 x 1.17 in. / 33.4 x 29.6 mm
Inside W/H: 1.17 x 0.93 in. / 29.8 x 23.6 mm

W/H: 1.31 x 1.95 in. / 33.4 x 49.5 mm
Inside W/H: 1.17 x 1.66 in. / 29.8 x 42.2 mm

W/H: 1.31 x 2.03 in. / 33.4 x 51.6 mm
Inside W/H: 1.17 x 1.74 in. / 29.8 x 44.1 mm





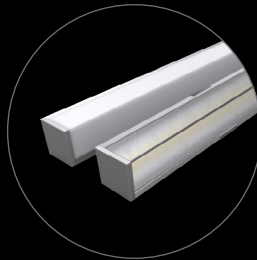
CORNER CHANNELS

Corner channel options are designed for use in the corners of a wall or ceiling and in special uses like cabinetry and furniture.


AC1



Part: CHAC1
 W: 0.63 in. / 16 mm
 H: 0.63 in. / 16 mm
 Inside W: 0.49 in. / 12.45 mm



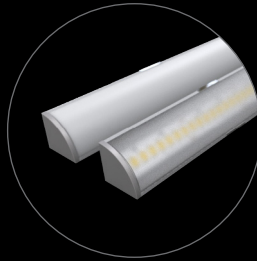
Available Accessories:
 Mounting Clip (included)

Housing Finishes:  Lens Finishes:
 Frosted, Milky


AC2



Part: CHAC2
 W: 0.59 in. / 15 mm
 H: 0.59 in. / 15 mm
 Inside W: 0.49 in. / 12.45 mm



Available Accessories:
 Mounting Clip (included)

Housing Finishes:  Lens Finishes:
 Frosted, Milky

100°
 X
 140°


AC3



Part: CHAC3
 W: 0.73 in. / 18.54 mm
 H: 0.73 in. / 18.54 mm
 Inside W: 0.48 in. / 12.19 mm

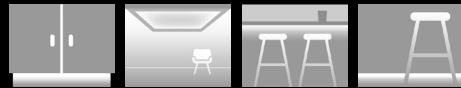


Available Accessories:
 Mounting Clip (included)

Housing Finishes:  Lens Finishes:
 Frosted, Milky

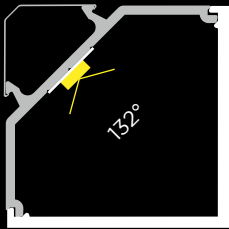


Suggested Applications:

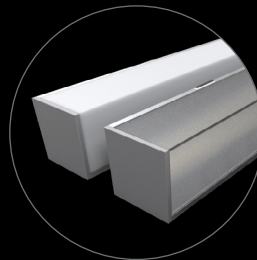


See accessories on page 30.
Appropriate end caps included with each fixture.

AC4



Part: CHAC4
W: 1.17 in. / 29.72 mm
H: 1.17 in. / 29.72 mm
Inside W: 0.8 in. / 20.32 mm



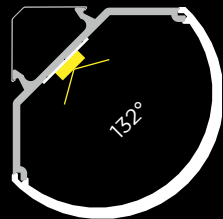
Available Accessories:
Mounting Clip (included)

Housing Finishes:

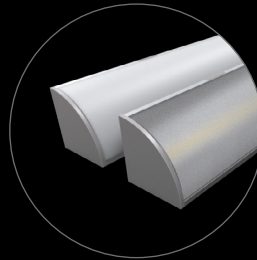


Lens Finishes:
Frosted, Milky

AC5



Part: CHAC5
W: 1.11 in. / 28.19 mm
H: 1.11 in. / 28.19 mm
Inside W: 0.8 in. / 20.32 mm



Available Accessories:
Mounting Clip (included)

Housing Finishes:



Lens Finishes:
Frosted, Milky

RECESSED CHANNELS

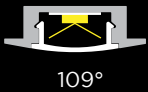
Our recessed channels create a polished, professional look in any setting. Consider recessed lighting profiles when you want your lighting surface almost level with the plane of a ceiling, wall or piece of furniture. Control lumen output and focus your LEDs with a wide array of lens selections.

Suggested Applications:

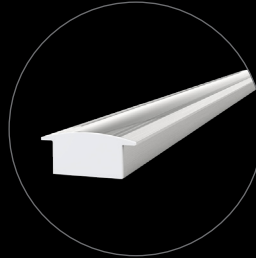


See accessories on page 30.
Appropriate end caps included with each fixture.

AR1



Part: CHAR1
W: 0.9 in. / 22.9 mm
H: 0.31 in. / 7.87 mm
Inside W: 0.49 in. / 12.5 mm



Available Accessories:
Mounting Clip (included)



Lens Finishes:
Clear, Frosted, Milky

AR3



Part: CHAR3
W: 1.2 in. / 30.5 mm
H: 0.39 in. / 9.9 mm
Inside W: 0.81 in. / 20.6 mm



Available Accessories:
Mounting Clip (included)

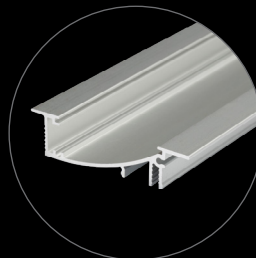


Lens Finishes:
Clear, Frosted, Milky

AR8



Part: CHAR8
W: 0.53 in. / 13.5 mm
H: 2.09 in. / 53 mm
Inside W: 0.42 in. / 10.6 mm
Inside H: 1.42 in. / 36 mm



Available Accessories:
Mounting Clip, Spring Clip
(included)

180° Coupler (not included)

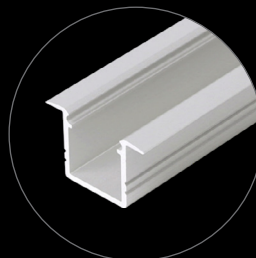


Lens Finishes:
Clear, Frosted, Milky

AR10



Part: CHAR10
W: 0.74 in. / 18.8 mm
H: 0.47 in. / 12 mm
Inside W: 0.39 in. / 10 mm
Inside H: 0.44 in. / 11.2 mm



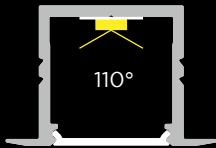
Available Accessories:
Mounting Clip (included)



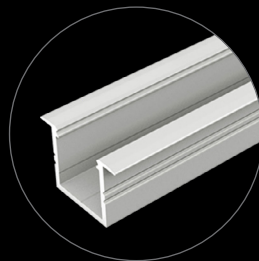
Lens Finishes:
Clear, Milky





AR16



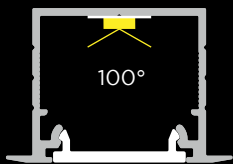
Part: CHAR16
 W: 1.1 in. / 28 mm
 H: 0.73 in. / 18.6 mm
 Inside W: 0.65 in. / 16.4 mm
 Inside H: 0.64 in. / 16.2 mm



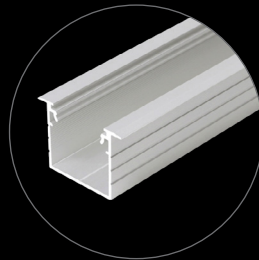
Available Accessories:
 Mounting Clip, Spring Clip (included)

Housing Finishes: Lens Finishes:
  Clear, Milky, Black

AR20



Part: CHAR20
 W/H:
 1.18 x 0.8 in. / 30 x 20.4 mm
 Inside W/H:
 0.83 x 0.73 in. / 21 x 18.5 mm

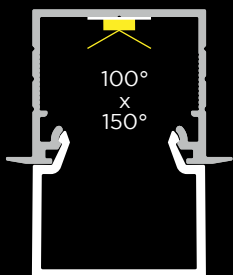


Available Accessories:
 Mounting Clip, Spring Clip (included)

Couplers: 180° (not included)

Housing Finishes:


Lens Finishes:
 Clear, Milky, Black,
 Square Milky

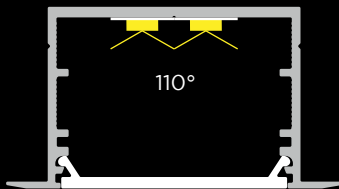


W/H:
 1.18 x 1.32 in. / 30 x 33.6 mm
 Inside W/H:
 0.83 x 1.24 in. / 21 x 31.6 mm

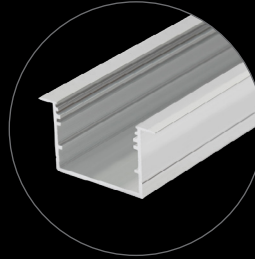
RECESSED CHANNELS

See accessories on page 30.
Appropriate end caps included with each fixture.

AR25



Part: CHAR25
W/H:
1.75 x 0.94 in. / 44.4 x 24 mm
Inside W/H:
1.22 x 0.91 in. / 31 x 23 mm



Available Accessories:
Mounting Clip, Spring Clip (included)

Couplers: 180° (not included)

Other: Reflector (not included)

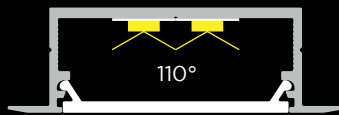
Housing Finishes:



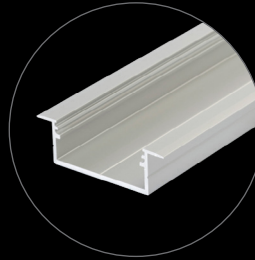
Lens Finishes:

Clear, Milky, Black

AR30



Part: CHAR30
W/H:
1.75 x 0.55 in. / 44.4 x 14 mm
Inside W/H:
1.22 x 0.51 in. / 31 x 13 mm



Available Accessories:
Mounting Clip, Spring Clip (included)

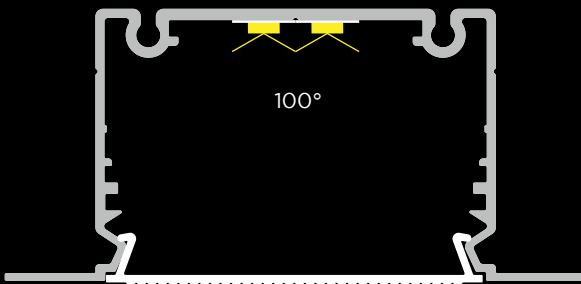
Housing Finishes:



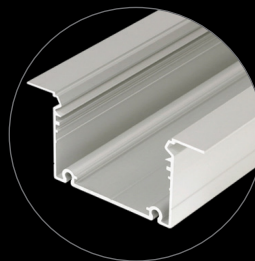
Lens Finishes:

Clear, Milky, Black

AR33



Part: CHAR33
W: 3.03 in. / 77 mm
H: 1.42 in. / 36 mm
Inside W: 1.32 in. / 33.6 mm
Inside H: 1.37 in. / 34.8 mm



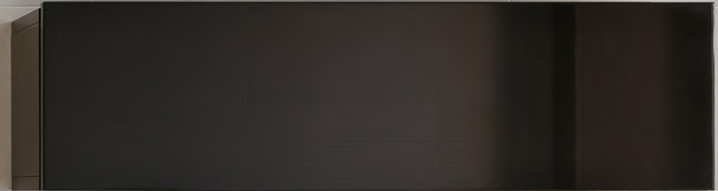
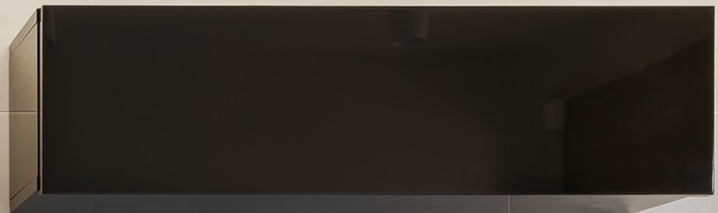
Available Accessories:
Mounting Clip (included)

Housing Finishes:



Lens Finishes:

Narrow Prismatic,
Wide Prismatic, Milky





SIMPLY CLEAN™ MUD-IN EXTRUSIONS

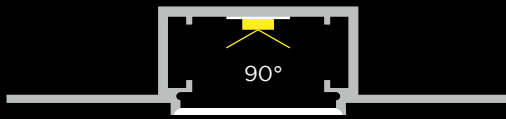
Simply Clean™ recessed fixtures are designed to sit flush to the surface of walls and ceilings. These mud-in aluminum extrusions can be installed in retrofit projects or new drywall/gypsum construction. Available in a wide selection of wattages and lumen outputs, Simply Clean™ products can be combined with static white, static colors, Variable White, RGBW and Warm Dim RibbonLyte to create complete fixtures.

Suggested Applications:

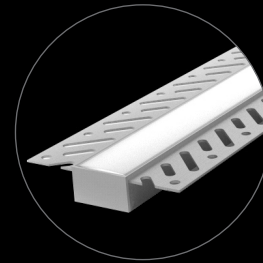


Simply Clean™ channels are recommended for indoor use. Appropriate end caps included with each fixture.

SC3



Part: CHSC3
 W: 2.62 in. / 66.6 mm
 H: 0.55 in. / 14 mm
 Inside W: 0.69 in. / 17.5 mm
 Inside H: 0.5 in. / 12.9 mm



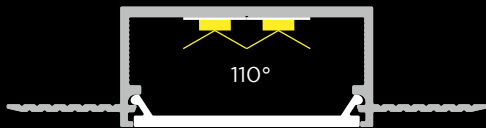
Housing Finish:



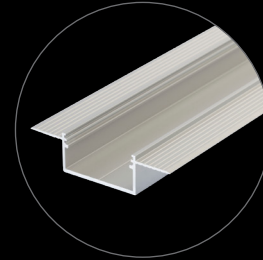
Lens Finish:

Milky

SC4



Part: CHSC4
 W: 2.5 in. / 63.4 mm
 H: 0.63 in. / 15.9 mm
 Inside W: 1.22 in. / 31 mm
 Inside H: 0.5 in. / 12.9 mm



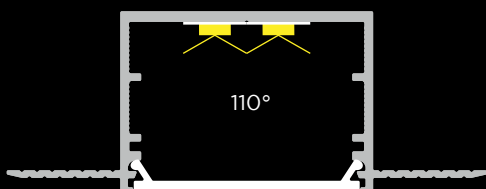
Housing Finish:



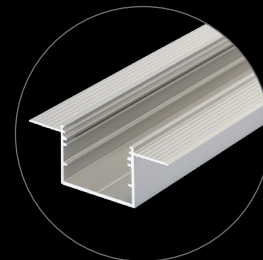
Lens Finishes:

Milky, Black

SC5



Part: CHSC5
 W: 2.5 in. / 63.4 mm
 H: 0.94 in. / 24 mm
 Inside W: 1.22 in. / 31 mm
 Inside H: 0.83 in. / 21 mm



Available Accessories:

Couplers: 180°
 (not included)

Other: Reflector
 (not included)

Housing Finish:



Lens Finishes:

Milky, Black

INDIRECT LIGHT CHANNELS

These channels create a hidden light source to provide ambience with subtle accent lighting. Whether used as a sconce or in a continuous line of light for wayfinding, indirect channel fixtures can be key to an effective and complete lighting design.

Suggested Applications:

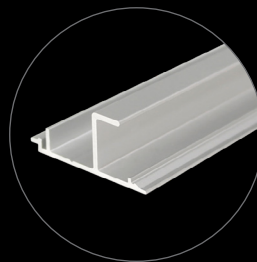


See accessories on page 30.
Appropriate end caps included with each fixture.

AW10



Part: CHAW10
W: 0.61 in. / 15.4 mm
H: 1.26 in. / 32 mm
Inside W: 0.41 in. / 10.5 mm
Inside H: 0.45 in. / 11.5 mm



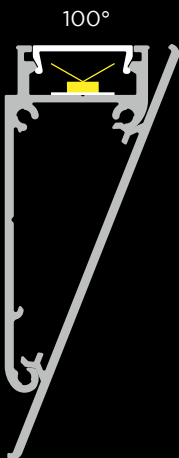
Housing Finishes:



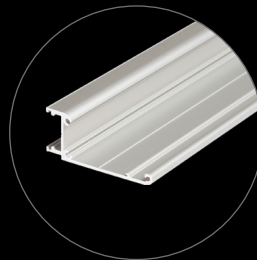
Lens Finishes:

Clear, Milky, Black

AW12



Part: CHAW12
With Click Lens:
W: 0.91 in. / 23 mm
H: 2.17 in. / 55 mm
Inside W: 0.56 in. / 14.2 mm
Inside H: 0.22 in. / 5.5 mm



Available Accessories:

Couplers: 180°
(not included)

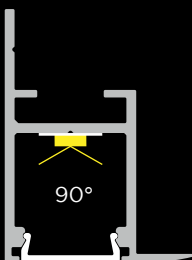
Housing Finishes:



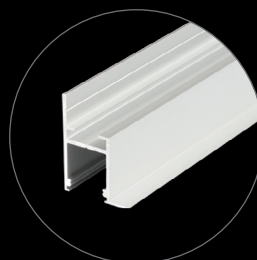
Lens Finishes:

Clear, Milky, Black

AW14



Part: CHAW14
W: 0.69 in. / 17.4 mm
H: 1.31 in. / 33.4 mm
Inside W: 0.58 in. / 14.8 mm
Inside H: 0.63 in. / 16 mm



Available Accessories:

Couplers: 180°
(not included)

Housing Finishes:



Lens Finishes:

Clear, Milky, Black

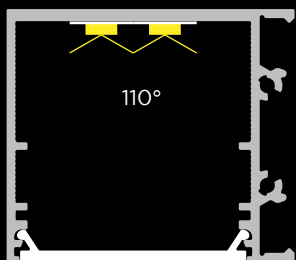


AW12 Channel Fixture

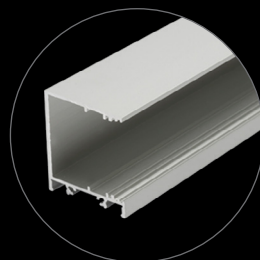


AW38 Channel Fixture

AW38



Part: CHAW38
 W: 1.5 in. / 38 mm
 H: 1.31 in. / 33.4 mm
 Inside W: 1.22 in. / 31 mm
 Inside H: 1.17 in. / 29.8 mm



Available Accessories:
 Mounting Clip (included)
 180° Coupler, Reflector (not included)

Housing Finishes: Lens Finishes:



Clear, Milky, Black,
 Round Milky,
 Square Milky

MICRO CHANNELS

Micro channels can create pinpoint lines of light when space is at a premium. Our Micro channel options are engineered for use with our 1.0, 3.0 and 4.5 Micro RibbonLyte to create clean, modern designs.

See accessories on page 30.
Appropriate end caps included with each fixture.

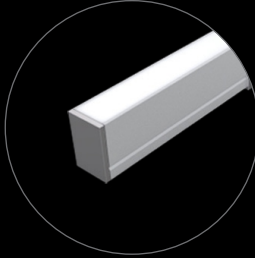
Suggested Applications:



AS7



Part: CHAS7
W: 0.39 in. / 10 mm
H: 0.59 in. / 15 mm
Inside W: 0.31 in. / 8 mm



Available Accessories:
Mounting Clip (included)

Magnetic Mount (not included)

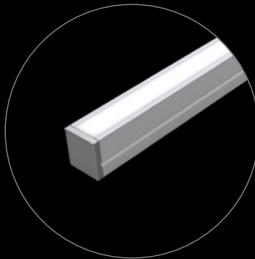
Housing Finishes: Lens Finishes:



AS9



Part: CHAS9
W: 0.31 in. / 8 mm
H: 0.35 in. / 8.9 mm
Inside W: 0.22 in. / 5.7 mm



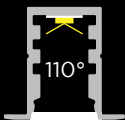
Available Accessories:
Mounting Clip (included)

Magnetic Mount (not included)

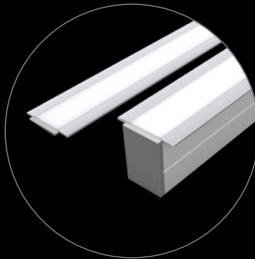
Housing Finishes: Lens Finishes:



AR7



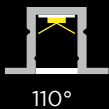
Part: CHAR7
W: 0.63 in. / 16.1 mm
H: 0.59 in. / 15 mm
Inside W: 0.33 in. / 8.5 mm



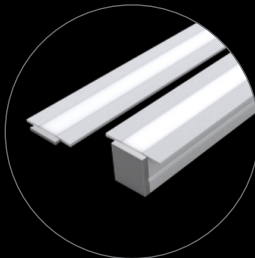
Housing Finishes: Lens Finishes:



AR9



Part: CHAR9
W: 0.54 in. / 13.6 mm
H: 0.35 in. / 8.9 mm
Inside W: 0.22 in. / 5.7 mm

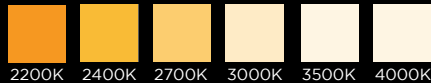


Housing Finishes: Lens Finishes:





PICCOLO MICRO FIXTURE



RoHS

TITLE 24
JA 8
COMPLIANT

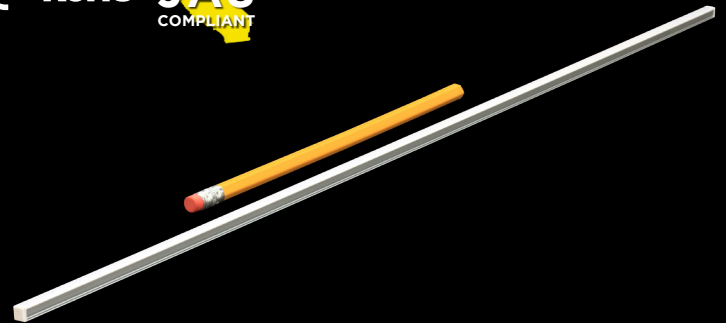
55°



W: 0.2 in. / 5 mm

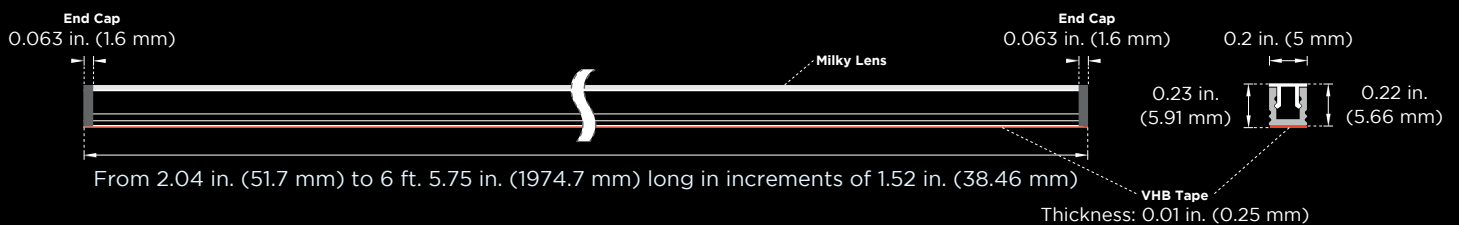
H: 0.23 in. / 5.91 mm

Length up to 6 ft 5.75 in. (1974.7 mm)



The Piccolo is a special micro fixture that stands just 0.23 in. (5.91 mm) high and 0.2 in. (5 mm) wide. The Piccolo uses a flat milky lens to create pinpoint lines of light in tight spaces such as custom millwork. It is sold in custom sizes ranging from 2.04 in. (51.7 mm) to 6 ft. 5.75 in. (1974.7 mm) long in increments of 1.52 in. (38.46 mm). The Piccolo features a special IP20 micro RibbonLyte that provides 90+ CRI in six available CCTs ranging from 2200K to 4000K.

- 3.0 W/ft (9.8 W/m)
- 0.2 in. (5 mm) wide by 0.23 in. (5.91 mm) high
- Fixture includes secure VHB tape backing
- Smallest fixture at 2.04 in. (51.7 mm) including end caps
- Sold in 1.52 in. (38.46 mm) increments up to 6 ft 5.75 in. (1974.7 mm)
- 55-degree beam angle
- Flat milky lens
- 55 LEDs/ft (182 LEDs/m)
- 90+ CRI
- IP20 rating for indoor use





BENDABLE CHANNEL

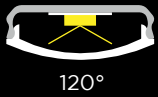
Trace the arch of a doorway or window frame, create elegant pendants or build other custom shapes and designs with our bendable channel fixture and lens options.

See accessories on page 30.
Appropriate end caps included with each fixture.

Suggested Applications:

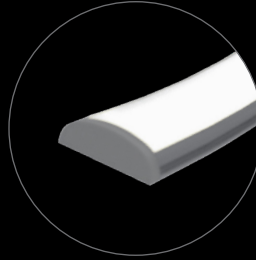


B1



120°

Part: CHB1
W: 0.77 in / 19.6 mm
H: 0.26 in / 6.5 mm
Inside W: 0.69 in / 17.6 mm



Available Accessories:
Mounting Clip (included)

Housing Finishes:



Lens Finishes:

Clear, Frosted, Milky

B2



100°
x
140°

Part: CHB2
W: 0.79 in. / 20 mm
H: 0.48 in. / 12.1 mm
Inside W: 0.46 in. / 11.6 mm
Inside H: 0.33 in. / 8.5 mm



Available Accessories:
Mounting Clip, Side Mounting Clip,
Sling (included)

Housing Finishes:



Lens Finishes:

Milky, Round Milky*

*Round Milky Lens does not bend.



100°
x
140°

W: 0.79 in. / 20 mm
H: 0.24 in. / 12.1 mm
Inside W: 0.46 in. / 11.6 mm
Inside H: 0.17 in. / 4.3 mm



B2 Channel



B2 Channel with Sling

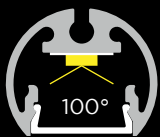
ROUND CHANNEL

Custom Round LED fixtures can provide decorative lighting in walls, display cabinets, closets and furniture. We offer vertical and horizontal mounting options, including rod mounts and extension arms.

See accessories on page 32.

Appropriate end caps included with each fixture.

ROUND12 (for highlighting wall art)



Part: CHROUND12
W: 0.79 in. / 20 mm
H: 0.67 in. / 17 mm
Inside W: 0.41 in. / 10.4 mm
Inside H: 0.39 in. / 10 mm



Available Accessories:
Mounting Clip (included)

Stainless Steel Mounting Clip, Rod Mount, Ring Holder, Chrome Rod Extension Arm w/ Thread, Chrome Rod Extension Arm, Wall-Mounted Extension Arm, Top-Mounted Extension Arm (not included)

Housing Finishes:



Lens Finishes:

Clear, Milky, Black





WORK IT

IT'S NOT
A FACIAL
IT'S A
WORKOUT.

NEW
WINTER
MENU

Shown: FaceGym | New York, NY, USA
Static White Matrix RibbonLyte, C35 (Custom) Channel
Lighting Designer: Regency Lighting
Photographer: David Handschuh



ACCESSORIES

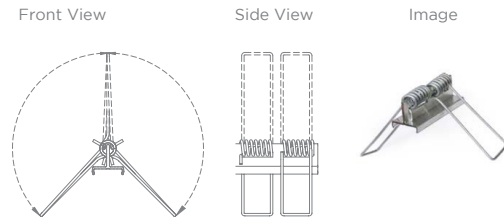
MOUNTING CLIPS/SLING

Each applicable channel comes with all the appropriate mounting clips you need for field assembly.

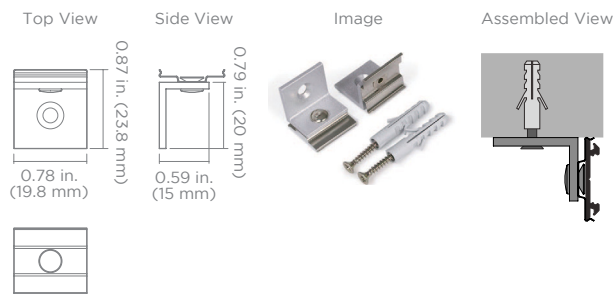
Mounting Clip (Styles Vary Per Channel)



Spring Clip (Styles Vary Per Channel)



Side Mounting Clip for B2 Channel



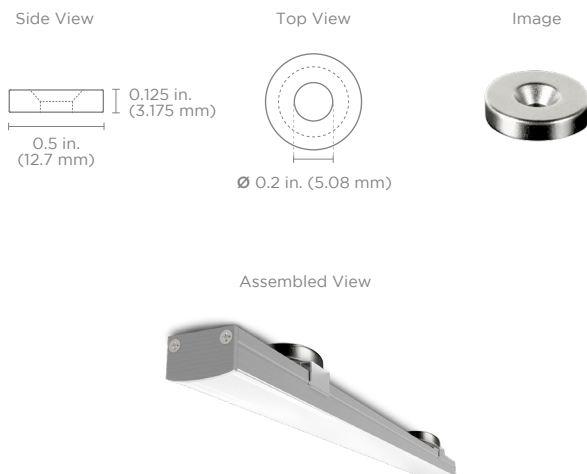
Sling Mount



MAGNETIC MOUNTS

We join high-energy neodymium magnets to your mounting clips to provide easy-mount magnetic channels with minimal surface gaps. Each magnet is rated for 8 lbs. of pull force, so your fixtures are stable and safe.

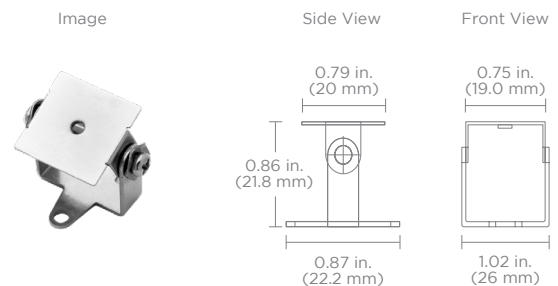
Magnetic Mount



TILTABLE STANDS

Many channel fixtures can be used with our stainless steel Tiltable Stands, which allow you to further adjust your angles and direct beams of light with pinpoint accuracy.

Tiltable Stand



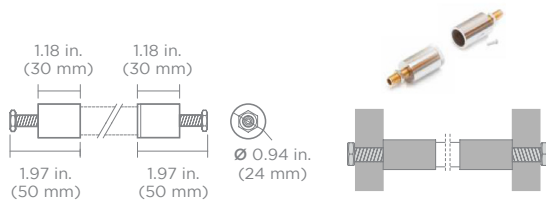


Shown: Milos Wine Bar | New York, NY, USA
Static White Series 2 RibbonLyte, AR1 channel, AS2 channel, 24V Lutron Hi-lume driver Lighting
Designer: Hilary Wainer, Lux et Veritas Design
Photographer: David Handschuh

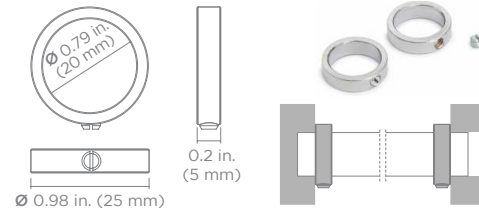
ACCESSORIES

ROUND12 CHANNEL ACCESSORIES (PG. 29)

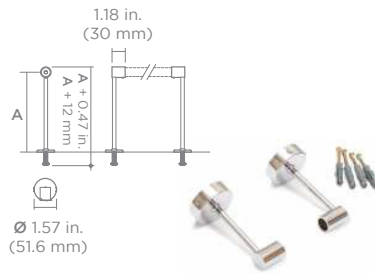
Rod Mount



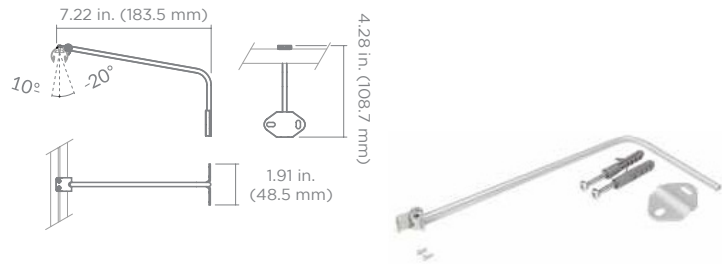
Ring Holder



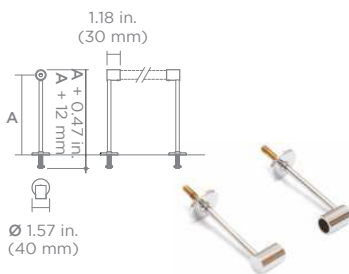
Chrome Rod Extension Arm



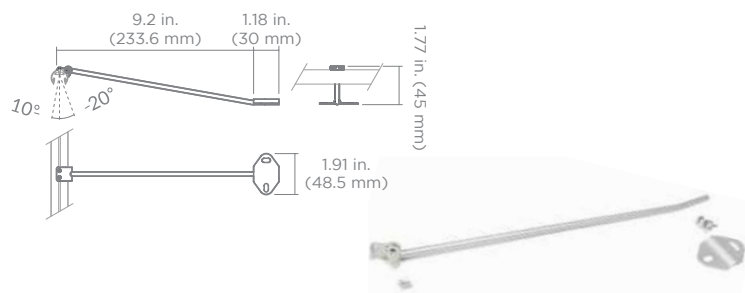
Wall-Mounted Extension Arm



Chrome Rod Extension Arm w/ Thread



Top-Mounted Extension Arm





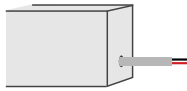


CONNECTION OPTIONS

We also offer several connection options to customize a channel fixture so it's suitable for wiring LEDs in your project. Our default option is a standard end feed, but we can provide a back feed, a side feed, an IP67 connector input, a soldered daisy chain with another fixture, or a daisy chain with IP67 connectors to match your specifications.

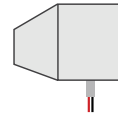
End Feed Bare Wire Connection

(Default)



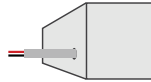
Wire Length:
Standard 12 in. / Custom up to 20 feet

Back Feed Bare Wire Connection



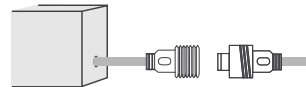
Wire Length:
Standard 12 in. / Custom up to 20 feet

Side Feed Bare Wire Connection



Wire Length:
Standard 12 in. / Custom up to 20 feet

End Feed w/ IP67 Male Coupler



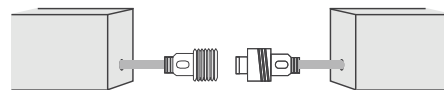
Wire Length:
Standard 12 in. / Custom up to 20 feet

Soldered Daisy Chain



Wire Length:
Standard 3 in. / Custom up to 3 feet

Daisy Chain w/ IP67 Couplers



Wire Length:
Standard 3 in. / Custom up to 18 in.

Left: Paradise City Casino | Incheon, South Korea
Static White RibbonLyte, AS1, AS2, AS3 & AC2 Channels

CONTACT US

CALL US. EMAIL US. WRITE US A LETTER.
CONNECT WITH US ON SOCIAL MEDIA.



PRICING & SALES SUPPORT

T: (+1) 212 629 6830, ext. 300
E: SalesSupport@GENLEDBrands.com



TECHNICAL SUPPORT

T: (+1) 212 629 6830, ext. 301
E: Tech@GENLEDBrands.com



CUSTOMER SERVICE

T: (+1) 212 629 6830, ext. 304
E: CustomerService@GENLEDBrands.com



[linkedin.com/company/genledacolyte](https://www.linkedin.com/company/genledacolyte)



[facebook.com/acolyteled](https://www.facebook.com/acolyteled)



[instagram.com/acolyte_led](https://www.instagram.com/acolyte_led)



twitter.com/acolyteled

See our product videos in the Media section at Acolyte.com



GEN LED Brands™

ACOLYTE®
Architectural Lighting Solutions

AGILIGHT®
Innovative Signage Lighting

GLOBAL HQ & AMERICAN SALES

U.S., Canada, Central and South America

320 Murray Hill Pkwy
East Rutherford, NJ 07073
T: (+1) 212 629 6830
E: Sales-US@GENLEDBrands.com

EUROPEAN SALES HQ

With offices in Netherlands, UK, Italy, Germany

Dali Building
Herikerbergweg 286, 8th Floor
1101 CT Amsterdam, The Netherlands
T: (+31) 85 208 6093
E: SalesEurope@GENLEDBrands.com

MEINA SALES HQ

Middle East, India, Africa

PO Box 371378, #823, Building 4EA
Dubai Airport Free Zone, Dubai, UAE
T: (+971) 4 701 7901
E: SalesMEINA@genlebrands.com

ASIA-PACIFIC SALES HQ

With offices in Shenzhen, Shanghai, Singapore, Australia

Room 310-311, Building 8A-2,
Dezhigao Science Innovation Park, Zone 72
Xin'An Street,
Bao'An, Shenzhen,
China
Sales: (+86) 139 1836 3905
Office: (+86) 755 8529 0710
E: Sales-Pacific@GENLEDBrands.com

CONNECT WITH US

Stay informed about our industry-leading product and service updates, recent installations and more!

www.GENLEDBrands.com
AcolyteLED.com
AgiLight.com



Above: Whitney Architects | Chicago, IL, USA
3.0 Matrix RibbonLyte, AS2 Channel
Lighting Designer: Whitney Architects, Chicago Lightworks
Photographer: Kendall McCaugherty

www.GENLEDBrands.com/Acolyte
P. +1 212.629.6830
F. +1 210.360.1454
Sales-US@GENLEDBrands.com

© 2022 GENLED Brands™. All rights reserved.
Some designs and technologies in the catalog are covered by U.S. Patents.
Corporate Headquarters East Rutherford, New Jersey, USA
New Jersey & Texas, USA • Shanghai & ShenZhen, China • Singapore • Dubai, UAE • Amsterdam, Netherlands • Sydney, Australia

REV.12DEC2022

